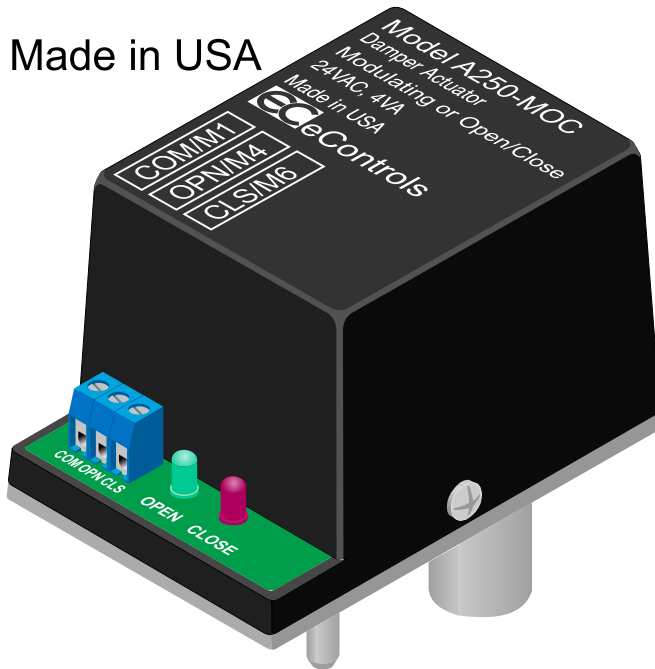




Damper Actuator, Modulating Model A250-MOC For Modulating or Open/Close Zoning Dampers

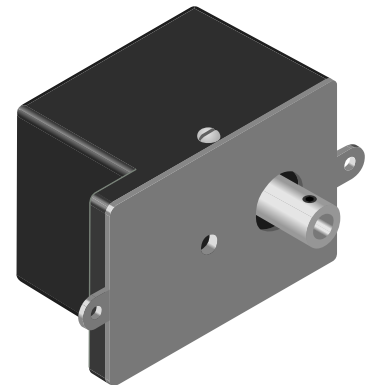
Made in USA



The A250-MOC is a 24VAC power open/close or modulating actuator for use with zoning dampers and provides 250 in-oz of torque. The actuator can operate either open/close or modulating.

Used with the eWD2 and eWD3 panels, the A250-MOC can be used for bypass excess airflow by opening just enough to maintain the minimum airflow and eliminate the need for bypass ducts and a barometric damper.

The A250-MOCT is supplied with mounting tabs and mechanically attached to the damper on standoffs.



Operation	Power Open, Power Close and Modulating.
Torque, Close	250 in-oz.
Rotation Angle	90 Degrees
Adjustable Close Angle	Adjustable from 50% to fully closed.
Operate Time	7 seconds fully close to fully open.
Noise	Silent.
Direction of Rotation	CCW to Open, viewed from top of actuator
Electrical Power, Running	24VAC, .17A (4VA)
Electrical Power, Holding	24VAC, .007A (.2VA)
Housing	Diecast metal base with plastic cover.
Mounting	Coupling with set screw for 5/16-inch diameter shaft and anti-rotation pin same as spring return actuator.
Mounting, Optional	Coupling with set screw for 5/16-inch diameter shaft and mounting tabs at both ends.
Electrical Connection	Screw terminals for AWG18 thermostat wire.
Dimensions	4.20 x 2.90 x 2.70 inches (LWH)

Adjustable Close Limit

The Close position can be set or limited using the internal cam shown below. Simply loosen the screw and rotate the cam CW and tighten screw. Minimum close position can be used to insure some airflow even when damper is closed.

